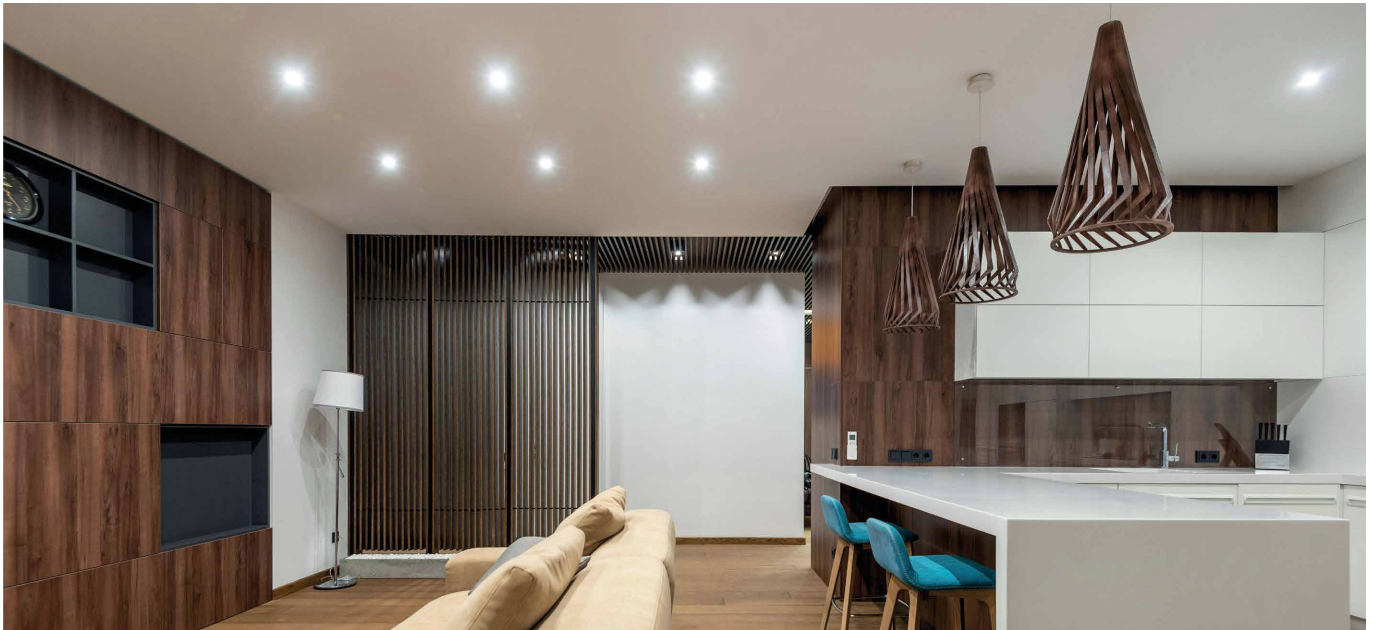


BIONIK 1

L21.



Polished, decorated aluminium recessed light with powerful LEDs suitable for decorative lighting of residential and retail environments. Choice of secondary recessed optics. Can be flush fitted indoors and outdoors if partially protected. Flush-mounted with springs.

Power LED CRI>80

Power: 3W@350mA - 6W@500mA

Lumen: 405Lm@350mA - 648Lm@500mA

350mA - 500mA constant current power supply

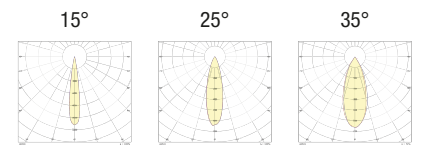
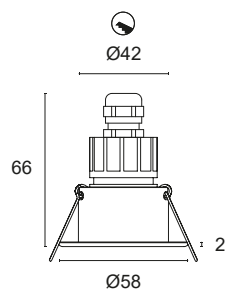
Series connection, 50 cm cable

Constant current power supplies page 232-233

Dimming Accessories page 249



 **MADE IN ITALY**



BASIC CODES

L21.

FINISHES

- 1 White
- 2 Matt black
- 5 Gloss aluminium
- 6 Chrome
- 7 Brushed aluminium

LIGHT BEAM

- 15 15°
- 25 25°
- 35 35°

LED COLOUR

- BN 4000K
- BC 3000K
- CC 2700K
- BL Blue
- VE Green
- RO Red
- AM "Wine" Amber

POWER

- 3 3x1W - 350mA - 405 lm**
- 5 3x2W - 500mA - 648 lm**



Code example:

BIONIK 1 + Brushed Aluminium + 15° light beam + 3000K + 3W = Code: L21.715BC3