

# EOS Q

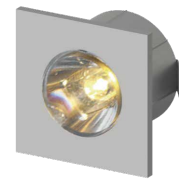
## L9Q.



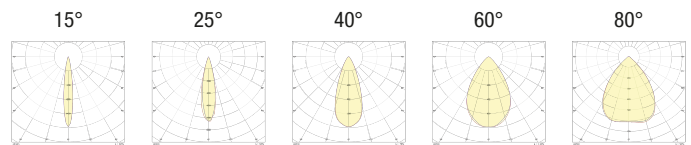
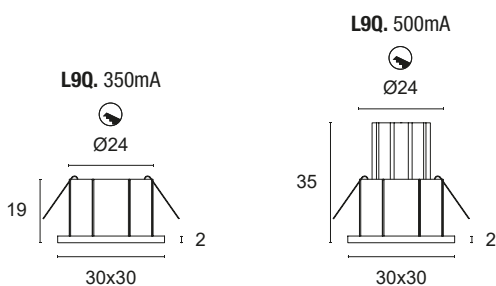
Flush-fitted in thermoplastic for accent, decoration and courtesy lighting. Choice of secondary optics, can be installed indoors, press-fit.

Power LED CRI>80  
 Power: 1W@350mA - 2W@500mA  
 Lumen: 135Lm@350mA - 216Lm@500mA  
 350mA - 500mA constant current power supply  
 Series connection, 50 cm cable

Constant current power supplies page 232-233  
 Accessories for quick connection page 244  
 Dimming Accessories page 249



**MADE IN ITALY**



**BASIC CODES**

**L9Q.**

**FINISHES**

- 1 White
- 2 Matt black
- 3 Brushed gold
- 6 Chrome
- 7 Brushed aluminium
- 8 Transparent
- 9 Polished gold

**LIGHT BAND**

- 15 15°
- 25 25°
- 40 40°
- 60 60°
- 80 80°

**LED COLOUR**

- BN 4000K
- BC 3000K
- CC 2700K
- BL Blue
- VE Green
- RO Red
- AM "Wine" Amber

**POWER**

- 3 1x1W - 350mA - 135 lm**
- 5 1x2W - 500mA - 216 lm**



Code example:

EOS Q + Brushed Aluminium + 15° light beam + 3000K + 1W = Code: L9Q.715BC3